

TIPS

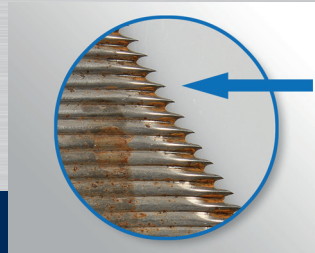
for the maintenance of headers with
SCHUMACHER EasyCut II cutting system
EASY CUT II
by SCHUMACHER.



1 Section - worn teeth



The teeth are pointed



The tooth transitions are rounded and blunt. The pointed teeth seem to be sharp, but they are not.



The stalks are not cut but pronged. This way they are pulled into the guard when the stroke is changed. This leads to blockages, higher input power and vibration.

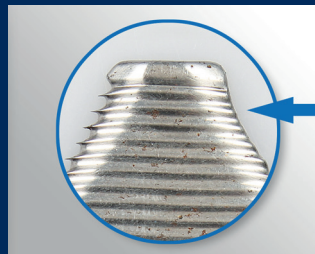


TIP: Avoid blockages, change section

2 Section - uneven wear



Increased wear of the right serration



The stroke to the right is not sufficient. The stalks are crushed and not cut, wear increases.



TIP: Stroke change is not correct, check knife drive

3 Section - rounded impact



Circular eruption of the teeth



If the reel sits too low, tines hit the cutting system and trigger strong kickbacks.



The rounded damage is caused by tine impact. This means a risk of breakage for the knife and knife drive.

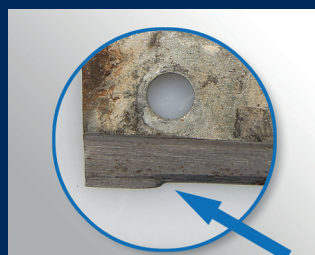


TIP: Avoid risk of breakage, check reel position

4 Section - change of shape



Section back is heavily worn



The rear edge of the section is worn because strong cutting forces stress the knife. The knife tilts during the cut.



TIP: Reduce wear, retrofit roller guides

TIPS

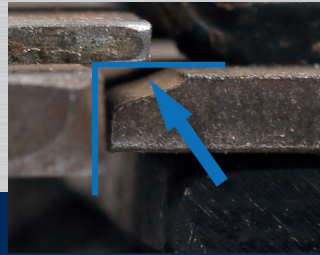
for the maintenance of headers with
SCHUMACHER EasyCut II cutting system
EASY CUT II
by SCHUMACHER.



5 Wear plate - worn



Support edge of the wear plate is worn out



The 90° edge supporting the knife is worn. The knife back and the section no longer have a guidance.



Lacking proper control and guidance, the section wobbles as it moves in the gap, and the wear of all components increases.

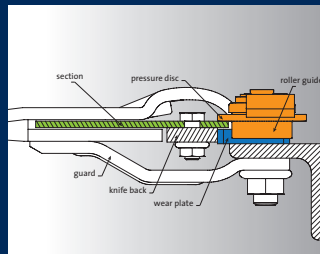


TIP: Knife has lost optimum counter balance, replace guide plate

6 Cutting system with roller guides



Smooth and quiet knife operation

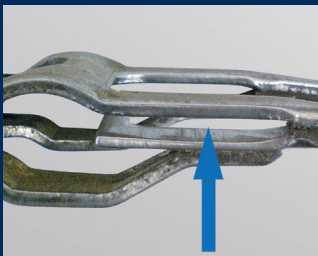


The roller keeps the section straight in the cutting gap. The use of the roller guide extends the service life of all cutting system components.



TIP: Retrofit the roller

7 Guard - widened gap



Check the gap with the SCHUMACHER MultiTool



Opening dimension new: 4.0 mm. The control wedge of the MultiTool does not fit into the gap yet.



Opening dimension > 5.4 mm: If the control wedge fits completely into the widened gap, the guard can no longer guide the knife safely, it floats.



TIP: Check cutting gap, replace guard

Perfect Harvest.

SCHUMACHER GmbH
Siegener Str. 10 · 57612 Eichelhardt / Germany · Fon +49 (0) 2681 8009 0 · info@groupschumacher.com · www.groupschumacher.com

Further tips and advice can be found mobile with the Perfect Harvest app.

Perfect Harvest.
App

